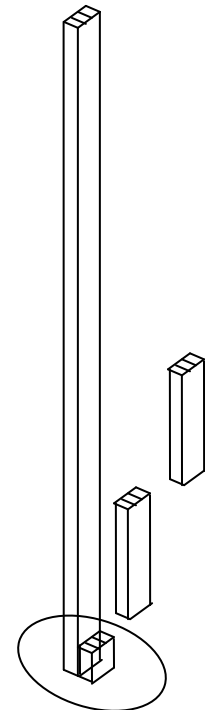
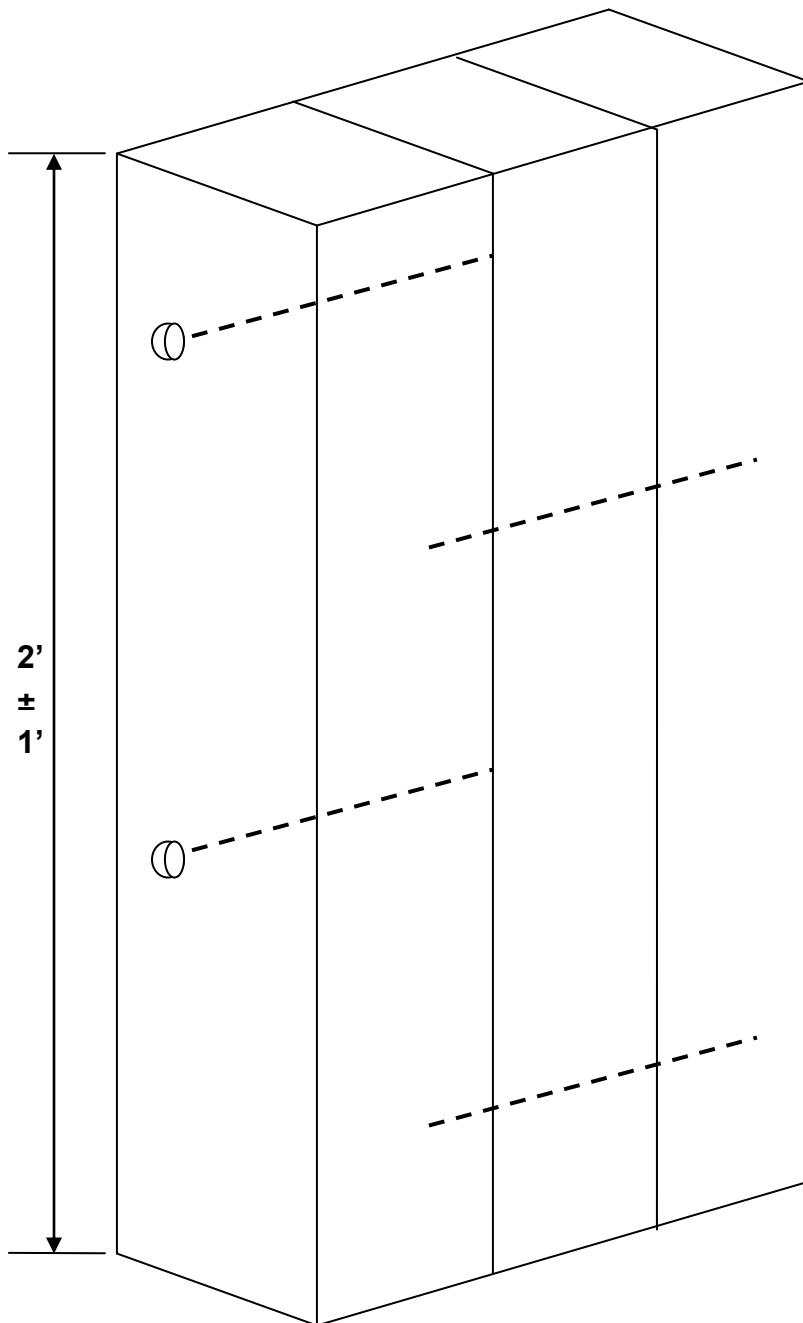


# CONCLAVE TOTEM



**Final Assembly  
at Conclave**

## INSTRUCTIONS:

- Use three pieces of 4" x 6" pressure treated pine. Recommended length is 2', but it can vary  $\pm 1'$ . Two 6" x 6" pieces will also work if that is what you have on hand.
- Screw together using 8" log screws. Screws are staggered to draw ends of wood together.
- Counter bore holes so screw heads will be below surface.
- Carve front and sides with lodge name, number, totem, etc. Weatherproof and paint as desired. Back will not be visible on final assembly.
- Each lodge's totem will be attached with log screws to a full length set of three 4"x 6"s to form the final conclave totem.